



What is 4-H?



Members select projects and activities that they are interested in learning more about.



Members work on their projects and activities - sometimes on their own, sometimes with others. Often one can exhibit their work at their County Fair.



Members often participate in club meetings, workshops, and receive help from 4-H adult volunteers.



Club meetings may include activities such as speakers, demonstrations, field trips, and recreation.



It's easy to join! Call your extension office TODAY!
See www.ces.purdue.edu/counties.htm

PURDUE
UNIVERSITY

Want more information?

Contact your local Extension Office!



PURDUE
UNIVERSITY

Equal Opportunity Employment

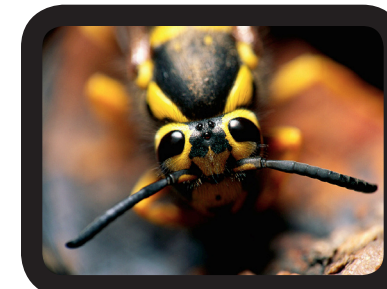
It is the policy of the Purdue University School of Agriculture that all persons shall have equal opportunity and access to the programs and facilities without regard to race, color, sex, religion, national origin, age, marital status, parental status, sexual orientation, or disability. Purdue University is an Affirmative Action employer.

Design by Samantha Sisk

www.four-h.purdue.edu



Natural Resource Programs



www.four-h.purdue.edu

4-H Natural Resource Projects

Beekeeping – learn about raising bees, beekeeping equipment and the wax and honey they produce.

Entomology – study insects and their relationship with people. Also learn how to collect, preserve, and identify insects.

Forestry – learn how to identify trees, their uses and benefits as well as the importance of our woodlands.

Geology – learn how to identify Indiana rocks, fossils, and minerals while studying the earth's crust and its history.

Soil & Water Conservation – learn about soil, water, and environmental stewardship.

Weather – learn how to observe and record weather conditions, what causes variations in weather, and why we have different climates and seasons.

Wildlife – learn to identify wildlife, basic wildlife needs, and how wildlife interact with other wildlife and with people.

Career Development Events

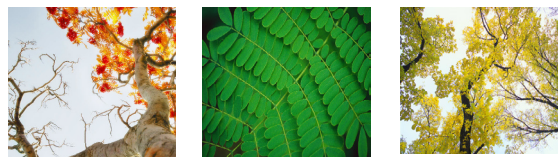


There are 12 different CDEs that you can participate in. Natural Resource CDEs include:

Soils
Forestry
Entomology
Wildlife Habitat Evaluation

Opportunities offered through Indiana's 4-H / FFA Career Development Events (identification, information, and judging contests) enhance many skills:

Decision Making
Critical Thinking
Team Work
Public Speaking



The 4-H Motto:
"To make the best better."

