

# 4-H BICYCLE RODEO



Purdue University Cooperative Extension Service

# TABLE OF CONTENTS

	Page
<b>I. INTRODUCTION</b>	
A. Rodeo Objective.....	1
B. Rodeo Goals.....	1
<b>II. THE RODEO</b>	
A. Participation.....	1
B. County Planning.....	1
C. Organizer(s) Responsibilities.....	1
D. Equipment.....	2
<b>III. OFFICIAL RULES</b>	
A. Junior Division.....	3
1. General Rules.....	3
2. Eligibility.....	3
3. Scoring.....	3
4. Written Examinations.....	3
5. Maintenance/Safety Check.....	4
6. Parts, Tools, and Accessories Identification.....	4
7. Bicycles.....	4
8. Skill Events.....	4
B. Senior Division.....	4
1. General Rules.....	4
2. Eligibility.....	5
3. Scoring.....	5
4. Written Examinations.....	5
5. Maintenance/Safety Check.....	5
6. Parts, Tools, and Accessories Identification.....	6
7. Bicycles.....	6
8. Skill Events.....	6
<b>IV. SKILLS EVENTS</b>	
A. Skill Event 1.....	7
1. Course Outline.....	7
2. Scoring Instructions.....	8
B. Skill Event 2.....	11
1. Balance Test (straight lane).....	11
2. Figure Eight Steering.....	11
3. Figure Eight Balance Test.....	12
4. Single Obstacle Test.....	12
5. Double Obstacle Test.....	13
6. Double Zigzag Obstacle Test.....	13
<b>V. SCORECARDS</b>	
A. Maintenance/Safety Check (4-H 733a).....	14
B. Parts, Tools, and Accessories Identification (Junior Division) (4-H 733b).....	15
C. Parts, Tools, and Accessories Identification (Senior Division) (4-H 733c).....	16
D. Skill Event 1 (4-H 733d).....	17
E. Balance Test (straight lane) (4-H 733e).....	18
F. Figure Eight Steering (4-H 733f).....	18
G. Figure Eight Balance Test (4-H 733g).....	19
H. Single Obstacle Test (4-H 733h).....	19
I. Double Obstacle Test (4-H 733i).....	20
J. Double Zigzag Obstacle Test (4-H 733j).....	20
K. Master Scoresheet (4-H 733k).....	21

## I. INTRODUCTION

### A. Rodeo Objective

The 4-H Bicycle Rodeo allows members to demonstrate, before peers and a panel of judges, their knowledge of bicycle maintenance, safety, and operation.

### B. Rodeo Goals

- Develop the skills, leadership, and citizenship of 4-H members.
- Emphasize safety practices.
- Maintain and increase interest of 4-H bicycle club members.
- Allow 4-H members to demonstrate bicycle driving skills; knowledge of traffic rules pertaining to bicycling; ability to identify bicycle parts and functions; and capability of diagnosing mechanical and safety problems.
- Provide a premier event for the 4-H bicycle program.
- Increase desire to complete the 4-H bicycle program.
- Provide an opportunity to inform the public of the 4-H bicycle program.

## II. THE RODEO

### A. Participation

Every county may send one contestant, per division (junior and senior), to the State 4-H Bicycle Rodeo.

### B. County Planning

The county rodeo should be organized by the county bicycle leader(s) and/or Extension youth educator.

Holding the county rodeo during the county fair or another community event can create considerable spectator interest and public support.

### C. Organizer(s) Responsibilities

- Select the date for the rodeo.
- Acquire the rodeo site. The rodeo site should be a plot of level, preferably paved, ground approximately 150 by 165 feet.  
**Note:** A smaller plot of land can be used if the rodeo courses are assembled and disassembled following each event.
- Notify participants of the time, date, and place for the rodeo.
- Acquire the equipment listed in Section D on page 2.
- Arrange for judges. There should be a minimum of two (2) judges per division.  
**Note:** Parents of participating youths should *not* be judges.
- Publicize the rodeo and its results in the news media (newspaper, radio, etc.).

## D. Equipment Needed

- Stop watches [minimum of four – two each for Obstacle Course 1 (Balance Test – straight lane) on page 11 and Obstacle Course 3 (Figure Eight Balance Test) on page 12]

**Note:** Only two stop watches are needed if Obstacle Courses 1 and 3 are run at different times.

- Clipboards and pencils (one clipboard per judge plus enough pencils so that the contestants may take the written, parts identification, and maintenance-safety check examinations.
- Materials to mark the courses.

*Plastic or rubber traffic cones:* Local police departments, electric utilities, and highway departments may be able to provide cones.

**Note:** If cones are unavailable, large sponges can be used.

*Masking Tape:* Needed if courses are set up on paved surface. (Can be used to mark boundaries on straight obstacle courses)

*Chalk:* Needed if courses are set up on paved surface. (Can be used to mark boundaries on obstacle courses)

*Lime:* Needed if courses are set up on unpaved surface. (Can be used to mark boundaries on obstacle courses)

*Ball of twine:* Needed if courses are set up on unpaved surface. (Can be used to mark boundaries on straight obstacle courses)

*Fence Staples or Nails:* Needed if courses are set up on unpaved surface. (Used to hold twine and surveyor's tape in place)

*Surveyor's (Flagging) Tape:* Can be used on all surfaces. Use in place of twine or masking tape. (Can be used to mark straight boundaries and excellent for use on Skill Event 1)

- Traffic signs (stop, yield, one-way)
- Lettered cards for scanning exercises (Skill Event 1). Four poster boards with the letters A, B, C, and D placed on different boards.
- Measuring tapes and yardsticks or rulers.

**Note:** One tape should be at least 100 feet long.
- One set of official scorecards for each contestant.
- Written examinations (See page 3 – junior division, and page 5 – senior division). One copy per contestant is required.
- Public address system (optional)

### III. OFFICIAL RULES

**Note:** The following is only a suggested guideline. County 4-H bicycle rodeos may be run in any manner deemed by county officials.

#### A. Junior Division

##### 1. General Rules

- Contestants are required to wear a helmet at all times when operating a bicycle.
- The driving order should be determined by allowing the contestants to draw numbers.
- In case of a tie score of a trophy award, the tie will be broken in the following manner: written exam; maintenance/safety check; parts identification; Skill Event 1; and Skill Event 2.
- Contestants are judged on safety at all times while at the contest site: before, during, and after their contestant operation.
- Any rule or interpretation not covered here will be decided by the superintendent and assistants or the contest. Their decisions are final.

##### 2. Eligibility

Junior Division contestants must be in either grades 3, 4, 5, 6, or 7 on January 1 of the contest year.

##### 3. Scoring

- The penalty scoring system is used.
- Unanswered or incorrectly answered questions and violations draw penalty points for the contestants.
- The contestant with lowest score or number of penalty points is the winner.
- Contestants are scored on:
  - Quiz questions on written examination.
  - Bicycle operation on skills events.
  - Maintenance and safety check of bicycle.
  - Bicycle parts, tools, and accessories identification.
  - Safety while at the rodeo.

##### 4. Written Examination

- Quiz questions are drawn from the Indiana 4-H bicycle manuals. State traffic rules and regulations pertaining to the operation of bicycles are covered.
- The written exam consists of 15 questions.
- Each question is worth four (4) points. A total of 60 penalty points are possible.
- Each contestant is given a maximum of 30 minutes to complete the exam.

## 5. Maintenance/Safety Check

- A bicycle is bugged with five (5) maintenance and/or safety problems.
- The bicycle used for the maintenance/safety check may be new or used. Numerous maintenance and safety hazards may already exist on a used bicycle.
- The maintenance/safety check is conducted in a secluded area away from the rodeo and is given to only one contestant at a time.
- Contestants are *not* allowed to inspect the bicycle prior to the maintenance/safety check.
- During the examination, contestants are *not* allowed to sit on the bicycle.
- Contestants, using the Maintenance/Safety Check Scorecard (page 14), identify the maintenance and/or safety hazards.
- A penalty of five (5) points is given for each maintenance and/or safety item missed incorrectly listed. A total of 25 penalty points is possible.
- A time limit of five (5) minutes is imposed.

## 6. Parts, Tools, and Accessories Identification

- Ten (10) items selected from the Junior Division Parts, Tools, and Accessories Identification Scorecard (page 15) is identified with a number.
- Contestants, using the Junior Division Parts, Tools, and Accessories Identification Scorecard (page 15), identify the tagged items by writing the item's identification number next to the item's name on the scorecard.
- Each item incorrectly identified results in a five (5) point penalty. A total of 50 penalty points is possible.

## 7. Bicycles

- Contestants are encouraged to use their own bicycles during the rodeo. Bicycles should be equipped with proper safety equipment (reflectors, etc.)
- Bicycles are provided for use by contestants unable to provide their own.
- Official judges may deem a bicycle unfit for use in the rodeo because of maintenance and/or safety hazards.

## 8. Skill Events

For directions on course set-up and operating procedure, see pages 7 to 13.

### **B. Senior Division**

#### 1. General Rules

- Contestants are required to wear a helmet at all times when operating a bicycle.
- The driving order should be determined by allowing the contestants to draw numbers.

- In case of a tie score for a trophy or trip award, the tie will be broken in the following manner: written examination; maintenance/safety check; parts identification; Skill Event 1; and Skill Event 2.
- Contestants are judged on safety at all times while at the contest site: before, during, and after their contest operation.
- Any rule or interpretation not covered here will be decided by the superintendent and assistants or the contest. Their decisions are final.

## 2. Eligibility

Senior Division contestants must be in grades 8, 9, 10, 11, or 12 on January 1 of the contest year.

## 3. Scoring

- The penalty scoring system is used.
- Unanswered or incorrectly answered questions and violations draw penalty points for the contestants.
- The contestant with the lowest score or number of penalty points is the winner.
- Contestants are scored on:
  - Quiz questions on the written examination.
  - Bicycle operation on skill events.
  - Maintenance and safety check of bicycle.
  - Bicycle parts, tools, and accessories identification.
  - Safety while at the rodeo.

## 4. Written Examination

- Quiz questions are drawn from the Indiana 4-H bicycle manuals. State traffic rules and regulations pertaining to the operation of bicycles are covered.
- The written exam consists of 25 questions.
- Each question is worth four (4) points. A total of 100 penalty points is possible.
- Each contestant is given a maximum of 30 minutes to complete the exam.

## 5. Maintenance/Safety Check

- A bicycle is bugged with ten (10) maintenance and/or safety problems.
- The bicycle used for the maintenance/ safety check may be new or used. Numerous maintenance and safety hazards may already exist on a used bicycle.
- The maintenance/safety check is conducted in a secluded area away from the rodeo and is given to only one contestant at a time.
- Contestants are not allowed to inspect the bicycle prior to the maintenance/safety check.

- During the examination, contestants are *not* allowed to sit on the bicycle.
- Contestants, using the Maintenance/Safety Check Scorecard (page 14), identify the maintenance and/or safety hazards.
- A penalty of five (5) points is assessed for each maintenance and/or safety item missed or incorrectly listed. A total of 50 penalty points is possible.
- A time limit of five (5) minutes is imposed.

#### 6. Parts, Tools, and Accessories Identification

- Twenty (20) items of bicycle parts, tools, accessories, and personal protective equipment are identified with a number.
- Contestants, using the Senior Division Parts, Tools, and Accessories Identification Scorecard (page 16), identify the tagged items by writing the item's common name in the blank corresponding to the item's number.
- Each item incorrectly identified results in a five (5) point penalty. A total of 100 penalty points is possible.
- A time limit of 30 minutes is imposed.

#### 7. Bicycles

- Contestants are encouraged to use their own bicycles during the rodeo. Bicycles should be equipped with proper safety equipment (reflectors, etc.).
- Bicycles are provided for use by contestants unable to provide their own.
- Official judges may deem a bicycle unfit for use in the rodeo because of maintenance and/or safety hazards.

#### 8. Skills Events

For directions on course set-up and operating procedure, see pages 7 to 13.

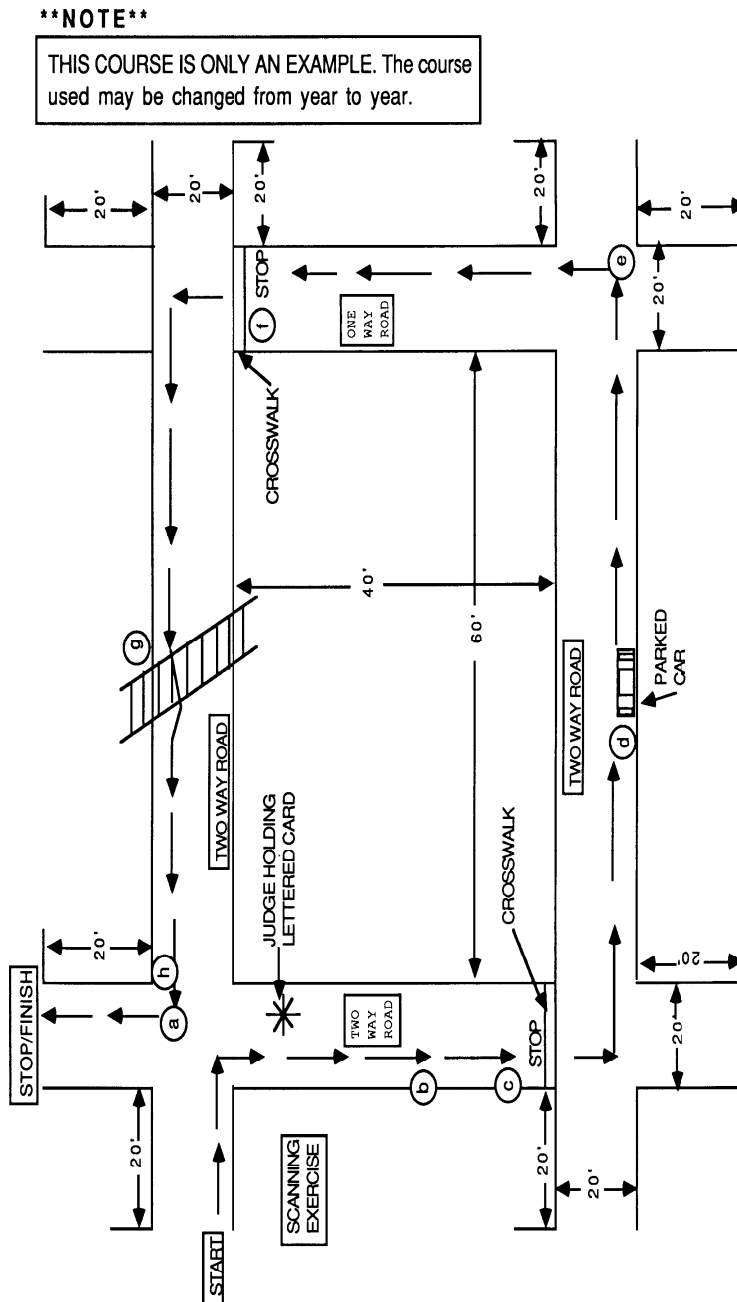
#### IV. SKILL EVENTS

Contestants are required to maneuver a bicycle through two different courses. Skill Event 1 simulates driving a bicycle in traffic conditions. Skill Event 2 consists of several different obstacle courses that test the contestants' ability to handle a bicycle.

##### A. Skill Event 1

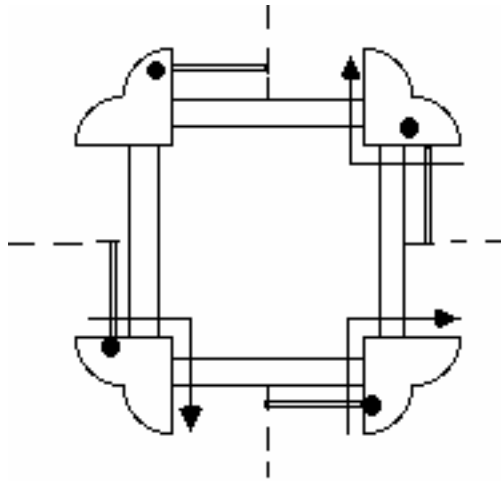
Contestants are expected to maneuver a bicycle through a course that represents driving a bicycle in traffic conditions. Contestants are judged on safety procedures and correct biking practices.

###### 1. Course Outline



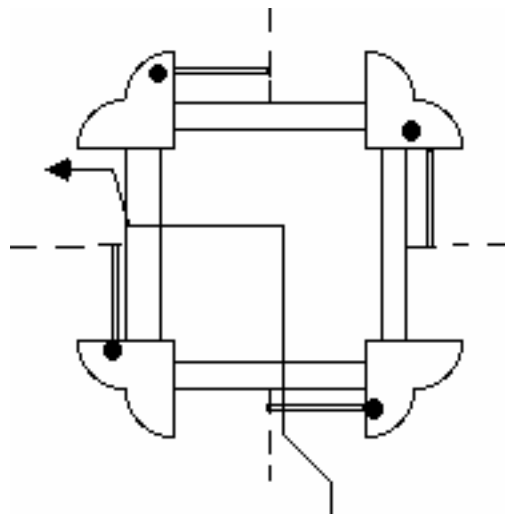
## 2. Scoring Instructions - Skills Event 1

- a. Right Turn – Bikers should signal by giving a right turn signal (left arm pointing upward at elbow). Before turning, the biker needs to scan for traffic.



Right turn - two-way to two-way

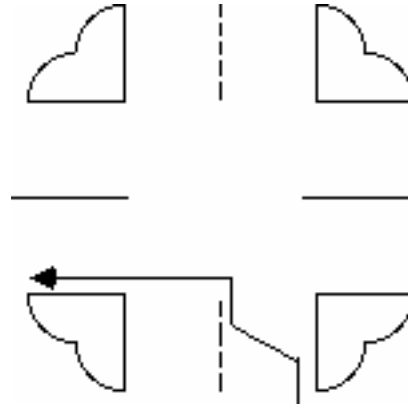
- b. Scanning Exercise - The biker's name is yelled by a judge at which time the biker is expected to scan to the rear and identify the letter on the card. The biker should look over the left shoulder.
- c. Stop – Left Turn – Draw a crosswalk or use an existing one. Instruct bikers to stop before the crosswalk, yielding right of way to any pedestrians. Before moving to the center of the road, the biker should signal a left turn (left arm fully extended parallel to ground), and scan to the rear for motor vehicles. After getting to the road's center, the biker should signal his or her intention to stop (left arm bent down at the elbow). Before turning, the biker should scan for traffic. After making the turn, the biker should signal a right turn (left arm bent upward at elbow in a right angle or right arm fully extended parallel to ground) before moving from the center to right side of the road).



Left turn - two-way to two-way

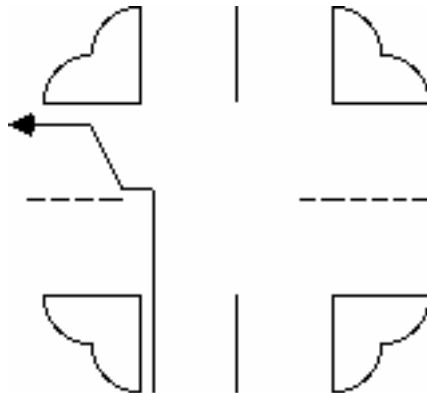
- d. Parked Car – Biker should ride in a straight line and stay at least three feet from parked vehicles when passing them. Biker should not weave between parked vehicles.
- e. Left Turn – Biker should signal a left turn by fully extending left arm parallel to ground. Left turn signal must be given before moving to the center of two-way street. An additional left turn signal may be given after moving to center of street but prior to making the left turn.

**Note:** The second left turn signal is optional and the biker will *not* be penalized for failing to give the signal. Before turning, biker should scan for traffic.



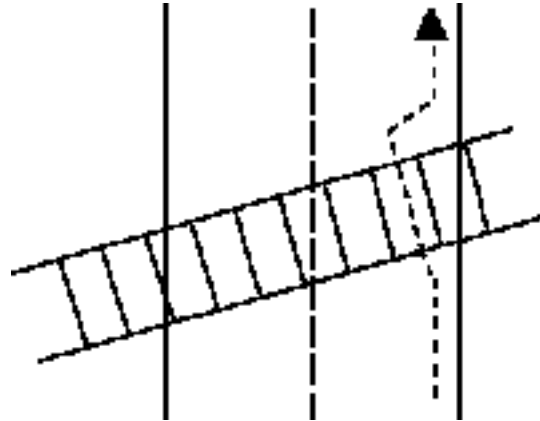
Left turn - two-way to one-way

- f. Stop – Left Turn – Draw a crosswalk or use an existing one. Instruct bikers to stop before the crosswalk, yielding right of way to any pedestrians. The biker should signal a left turn (left arm extended parallel to ground) and the intention to turn left at the intersection. The biker must come to complete stop. Before turning, the biker should scan for traffic. After making the turn, the biker should signal (left arm bent upward in a right angle or right arm fully extended parallel to ground) before moving from the center to the right side of the road.



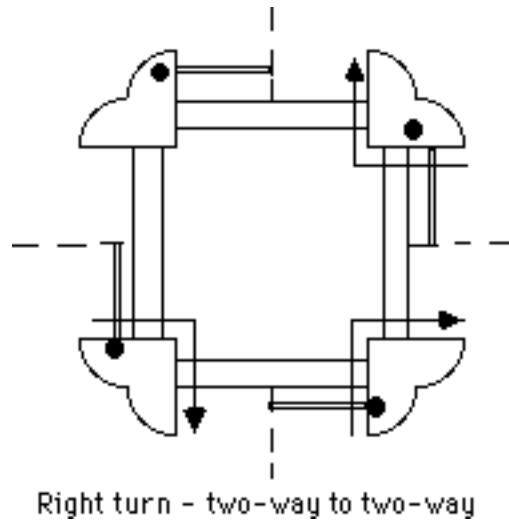
Left turn - one-way to two-way

- g. Railroad Tracks - The biker should give the slowing down (left arm bent down at elbow) signal. Two ways of crossing a railroad track are: dismount bike and walk across tracks or slow down and ride bike across tracks at a 90 degree angle to the rails (see below).



The biker must look both directions for a train prior to crossing the railroad track. The biker also should look behind, prior to crossing the tracks, to ensure the biker does not weave in front of a motor vehicle while crossing.

- h. Right Turn – Biker should signal a right turn (left arm bent upward in a right angle or right arm fully extended parallel to ground). Before turning, the biker should scan for traffic.



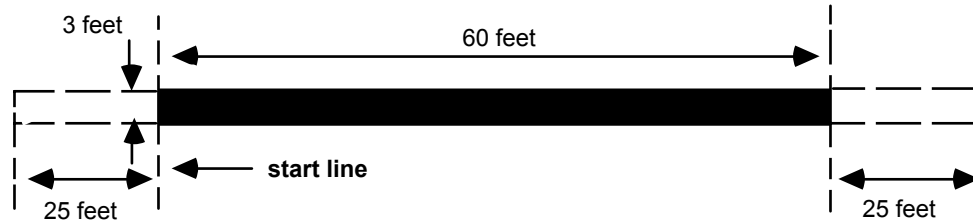
## B. Skill Event 2

Contestants are expected to maneuver a bicycle through several different obstacle courses. Contestants are judged on their ability to handle a bicycle in various situations. *Safety is judged at all times.*

### 1. Balance Test (Straight Lane)

Purpose – To test the balance of the rider.

Diagram –



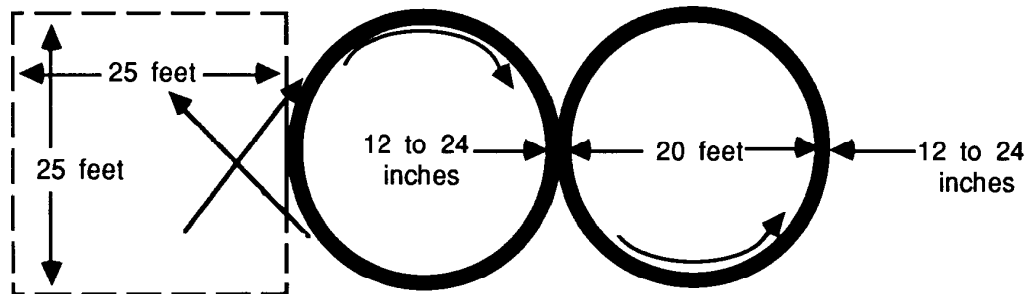
Procedure – The rider starts from a standstill with the front wheel on the “start” line and rides very slowly through the lane in **not less than 30 seconds**, with neither tire touching the lines on either side.

**Note:** An official may notify the contestant when 30 seconds has elapsed.

### 2. Figure Eight Steering

Purpose – To evaluate the rider’s ability in steering and balance.

Diagram –

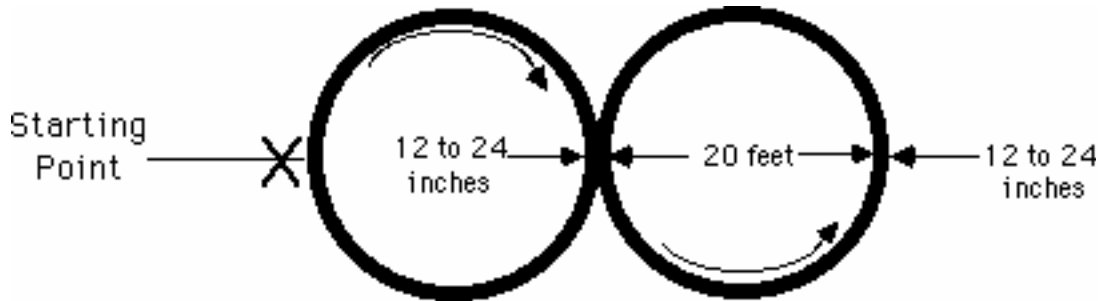


Procedure – The rider takes a moving start with both hands on the handlebars and makes three complete figure eights, with neither tire touching the lines on either side.

3. Figure Eight Balance Test

Purpose – To test the delicate balance of the rider on the figure eight.

Diagram –

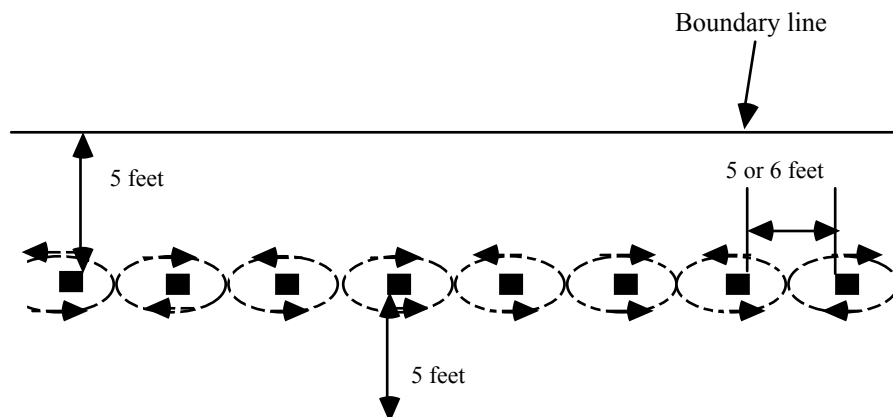


Procedure - The rider starts from a standstill with the front wheel on the starting point, and rides very slowly in the lane through the figure eight making one complete pattern in **not less than 45 seconds**, with neither wheel touching any borderline.

4. Single Obstacle Test

Purpose – To test the ability of the rider to maneuver in close quarters.

Diagram –

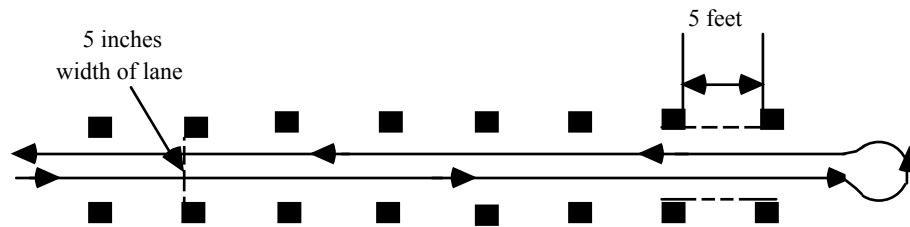


Procedure - the rider starts from a position behind the course so that balance is secured before the first obstacle is reached. The rider passes the first obstacle on the right and follows a serpentine course among the rest. When the last obstacle has been passed, the rider returns, weaving as before. The contestant may not pass over or beyond the side boundaries.

5. Double Obstacle Test

Purpose – To determine the rider’s ability to gauge limited space on a straight line.

Diagram –

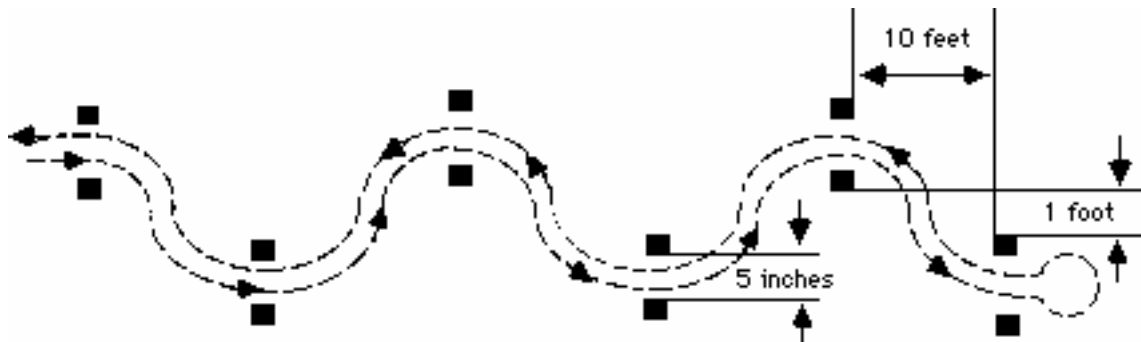


Procedure - From a riding start, the rider maneuvers slowly between the pairs of obstacles without touching any. When the rider has gone the entire distance, he/she turns and repeats the performance in the opposite direction

6. Double Zigzag Obstacle Test

Purpose – To test the rider’s ability to gauge limited space on a zigzag line.

Diagram –



Procedure - From a riding start, the bicyclist zigzags at a slow rate of speed between the pairs of obstacles without touching any obstacle. When the rider has traveled the entire distance, he/she turns and repeats the performance in the opposite direction.

Junior Division \_\_\_\_\_ Senior Division \_\_\_\_\_

Contestant Number \_\_\_\_\_ County \_\_\_\_\_

Contestant Name \_\_\_\_\_ Score \_\_\_\_\_

**BICYCLE MAINTENANCE/SAFETY CHECK**  
*Scorecard*

In the spaces below, identify the maintenance and/or safety hazards found on the bicycle.

Time limit = 5 minutes.

Penalty = 5 points per item missed or incorrectly listed. Maximum of 25 points.

**Note:** Junior division contestants should use only the first five blanks.

1. \_\_\_\_\_
2. \_\_\_\_\_
3. \_\_\_\_\_
4. \_\_\_\_\_
5. \_\_\_\_\_
6. \_\_\_\_\_
7. \_\_\_\_\_
8. \_\_\_\_\_
9. \_\_\_\_\_
10. \_\_\_\_\_

Junior Division \_\_\_\_\_

Contestant Number \_\_\_\_\_

County \_\_\_\_\_

Contestant Name \_\_\_\_\_

Score \_\_\_\_\_

**BICYCLE PARTS, TOOLS, AND ACCESSORIES IDENTIFICATION***Scorecard*

Items to be identified have a number attached to them. Select the most correct name from the list. Write the item's identification number in the blank before the item's name. Time limit = 30 minutes. Penalty = 5 points per item incorrectly identified.

_____ Allen wrench	_____ Pliers (needle-nose)
_____ Baggage carrier rack	_____ Pliers (regular)
_____ Bearing	_____ Plumber's wrench (pipe)
_____ Brake (front)	_____ Ratchet
_____ Brake (rear)	_____ Reflector
_____ Brake shoe	_____ Rim
_____ Cable	_____ Saddle (seat)
_____ Cable cutter (wire cutter)	_____ Saddle pack (bag)
_____ Chain	_____ Saddle post
_____ Chain guard	_____ Screwdriver (Phillips)
_____ Chain stay	_____ Screwdriver (regular)
_____ Chain wheel	_____ Seat stay
_____ Cone wrench	_____ Seat tube
_____ Crank	_____ Shift levers
_____ Crank extractor	_____ Socket
_____ Derailleur (front)	_____ Spoke
_____ Derailleur (rear)	_____ Sprocket
_____ Down tube	_____ Stem (handlebar)
_____ Feeder bottle (water)	_____ T-wrench
_____ Fender (front)	_____ Thumbscrew tool
_____ Fender (rear)	_____ (chain rivet extractor)
_____ Fork	_____ Tire
_____ Freewheel	_____ Tire gauge
_____ Freewheel extractor keys	_____ Tire iron
_____ Hammer (plastic)	_____ Tire pump
_____ Handlebar grip	_____ Tire valve
_____ Head tube	_____ Toe clip
_____ Hub	_____ Tool pouch
_____ Lamp (head)	_____ Top tube
_____ Oil	_____ Valve cap
_____ Pannier	_____ Valve stem
_____ Pedal	

Senior Division \_\_\_\_\_

Contestant Number \_\_\_\_\_

County \_\_\_\_\_

Contestant Name \_\_\_\_\_

Score \_\_\_\_\_

**BICYCLE PARTS, TOOLS, AND ACCESSORIES IDENTIFICATION**

*Scorecard*

Parts to be identified have a number attached to them. Write the **COMMON NAME** of the part in the space beside its corresponding number.

Time limit = 30 minutes. Penalty = 5 points per item incorrectly identified.

- 1. \_\_\_\_\_
- 2. \_\_\_\_\_
- 3. \_\_\_\_\_
- 4. \_\_\_\_\_
- 5. \_\_\_\_\_
- 6. \_\_\_\_\_
- 7. \_\_\_\_\_
- 8. \_\_\_\_\_
- 9. \_\_\_\_\_
- 10. \_\_\_\_\_
- 11. \_\_\_\_\_
- 12. \_\_\_\_\_
- 13. \_\_\_\_\_
- 14. \_\_\_\_\_
- 15. \_\_\_\_\_
- 16. \_\_\_\_\_
- 17. \_\_\_\_\_
- 18. \_\_\_\_\_
- 19. \_\_\_\_\_
- 20. \_\_\_\_\_

Junior Division \_\_\_\_\_ Senior Division \_\_\_\_\_

Contestant Number \_\_\_\_\_ County \_\_\_\_\_

Contestant Name \_\_\_\_\_ Score \_\_\_\_\_

**BICYCLE SKILL EVENT #1**

*Scorecard*

	<u>Number of times</u>	<u>Penalty Points</u>
<b>1. TURNING</b>		
a. Failure to give signal(s)	_____ x 10	_____
b. Improper signal given	_____ x 10	_____
c. Failure to check for traffic	_____ x 10	_____
d. Improper scanning for traffic	_____ x 5	_____
e. Improper turning techniques (Example: making left turn from far right side of road, etc.)	_____ x 5	_____
f. Skidding tire	_____ x 5	_____
g. Losing control of bike	_____ x 10	_____
<b>2. STOPPING</b>		
a. Failure to give signal	_____ x 10	_____
b. Improper signal given	_____ x 10	_____
c. Skidding tire(s)	_____ x 5	_____
d. Failure to stop before crosswalk	_____ x 5	_____
e. Failure to check before proceeding	_____ x 10	_____
f. Failure to stop	_____ x 15	_____
<b>3. GENERAL</b>		
a. Failure to ride on proper side of road	_____ x 10	_____
b. Skidding tires	_____ x 5	_____
c. Failure to keep appropriate distance from parked vehicle	_____ x 5	_____
d. Weaving between parked vehicles	_____ x 5	_____
e. Hitting parked car	_____ x 25	_____
f. Failure to cross railroad track at proper angle	_____ x 10	_____
<b>4. BRAKING</b>		
a. Skidding tire(s)	_____ x 5	_____
b. Swerving bicycle	_____ x 5	_____
<b>5. SCANNING EXERCISE</b>		
a. Looking over wrong shoulder	_____ x 5	_____
b. Failure to scan	_____ x 10	_____
c. Identifying object incorrectly	_____ x 5	_____
d. Losing control of bicycle	_____ x 10	_____
<b>6. OTHER</b>		
_____	_____ x 5	_____
_____	_____ x 5	_____
_____	_____ x 5	_____
_____	_____ x 5	_____
		<b>TOTAL</b> _____

Junior Division \_\_\_\_\_

Contestant Number \_\_\_\_\_

County \_\_\_\_\_

Contestant Name \_\_\_\_\_

Score \_\_\_\_\_

**BICYCLE BALANCE TEST (straight lane)**

*Scorecard*

<u>Infraction</u>	<u>Number of times</u>		<u>Penalty Points</u>
1. Touching foot to the ground	_____	x 5	_____
2. Wheels touch line on either side	_____	x 2	_____
3. Completing course in less than 30 seconds (1 point per second - maximum of 8)	_____	x 1	_____
4. <i>Not</i> using both hands on handlebars	_____	x 5	_____
5. Safety infraction (any safety infraction not covered above)	_____	x 10	_____
6. Other (Explain: _____)	_____	x 5	_____
<b>TOTAL</b>			_____

Junior Division \_\_\_\_\_

Contestant Number \_\_\_\_\_

County \_\_\_\_\_

Contestant Name \_\_\_\_\_

Score \_\_\_\_\_

**BICYCLE FIGURE EIGHT STEERING TEST**

*Scorecard*

<u>Infraction</u>	<u>Number of times</u>		<u>Penalty Points</u>
1. Touching foot to the ground	_____	x 5	_____
2. <i>Not</i> using both hands on handlebars	_____	x 5	_____
3. Having either tire touch any borderline	_____	x 2	_____
4. Off course	_____	x 5	_____
5. Safety infraction (any safety infraction not covered above)	_____	x 10	_____
6. Other (Explain: _____)	_____	x 5	_____
<b>TOTAL</b>			_____

Junior Division \_\_\_\_\_

Contestant Number \_\_\_\_\_

County \_\_\_\_\_

Contestant Name \_\_\_\_\_

Score \_\_\_\_\_

**BICYCLE FIGURE EIGHT BALANCE TEST**

*Scorecard*

<u>Infraction</u>	<u>Number of times</u>		<u>Penalty Points</u>
1. Touching foot to the ground	_____	x 5	_____
2. Having either tire touch any borderline	_____	x 2	_____
3. Off course	_____	x 5	_____
4. Completing course in less than 45 seconds (1 point per each second - maximum of 8)	_____	x 1	_____
5. <i>Not</i> using both hands on handlebars	_____	x 5	_____
6. Safety infraction (any safety infraction not covered above)	_____	x 10	_____
7. Other (Explain: _____)	_____	x 5	_____
<b>TOTAL</b>			

Junior Division \_\_\_\_\_

Contestant Number \_\_\_\_\_

County \_\_\_\_\_

Contestant Name \_\_\_\_\_

Score \_\_\_\_\_

**BICYCLE SINGLE OBSTACLE TEST**

*Scorecard*

<u>Infraction</u>	<u>Number of times</u>		<u>Penalty Points</u>
1. Touching foot to the ground	_____	x 5	_____
2. Hitting an obstacle	_____	x 2	_____
3. Having either tire touch or pass over borderline	_____	x 2	_____
4. Passing obstacle on wrong side	_____	x 5	_____
5. <i>Not</i> using both hands on handlebars	_____	x 5	_____
6. Skidding wheel	_____	x 10	_____
7. Safety infraction (any safety infraction not covered above)	_____	x 10	_____
8. Other (Explain: _____)	_____	x 5	_____

Junior Division \_\_\_\_\_

Contestant Number \_\_\_\_\_

County \_\_\_\_\_

Contestant Name \_\_\_\_\_

Score \_\_\_\_\_

**BICYCLE DOUBLE OBSTACLE TEST**

*Scorecard*

<u>Infraction</u>	<u>Number of times</u>		<u>Penalty Points</u>
1. Touching foot to the ground	_____	x 5	_____
2. Touching an obstacle	_____	x 2	_____
3. <i>Not</i> passing between any pair of obstacles	_____	x 5	_____
4. <i>Not</i> using both hands on handlebars	_____	x 5	_____
5. Skidding wheel	_____	x 10	_____
6. Safety infraction (any safety infraction not covered above)	_____	x 10	_____
7. Other (Explain: _____)	_____	x 5	_____
			<b>TOTAL</b>

Junior Division \_\_\_\_\_

Contestant Number \_\_\_\_\_

County \_\_\_\_\_

Contestant Name \_\_\_\_\_

Score \_\_\_\_\_

**BICYCLE DOUBLE ZIGZAG OBSTACLE TEST**

*Scorecard*

<u>Infraction</u>	<u>Number of times</u>		<u>Penalty Points</u>
1. Touching foot to the ground	_____	x 5	_____
2. Touching an obstacle	_____	x 2	_____
3. Failure to pass between a pair of obstacles	_____	x 5	_____
4. <i>Not</i> using both hands on handlebars	_____	x 5	_____
5. Skidding wheel	_____	x 10	_____
6. Safety infraction (any safety infraction not covered above)	_____	x 10	_____
7. Other (Explain: _____)	_____	x 5	_____
			<b>TOTAL</b>



It is the policy of the Purdue Cooperative Extension Service, David C. Petritz, Director, that all persons shall have equal opportunity and access to the programs and facilities without regard to race, color, sex, religion, national origin, age, marital status, parental status, sexual orientation, or disability. Purdue University is an Affirmative Action employer. This material may be available in alternative formats.

1-888-EXT-INFO

<http://www.agcom.purdue.edu/AgCom/Pubs/menu.htm>